

RESOLUTION NO. 7-11

A RESOLUTION of the Port of Camas-Washougal Commission providing for a re-drawing of Commissioner District boundaries pursuant to RCW 53.16.015 and RCW 29A.76.010.

WHEREAS, the Port of Camas-Washougal utilizes Commissioner Districts for the purpose of the election of Port District Commissioners; and

WHEREAS, Pursuant to RCW 29A.76.010, the Board of Commissioners of the Port of Camas-Washougal is required to review the population balance within each internal district of the Camas-Washougal Port District upon the release of new census data; and

WHEREAS, new 2010 census data has been provided to the Port of Camas-Washougal by the Washington State Redistricting Commission, and this information has been provided to the Port Commission; and

WHEREAS, the new 2010 census data will require the Port Commission District Boundaries to be redrawn, to encompass substantially equivalent population; and

WHEREAS, a public hearing has been held as required by the laws of the State of Washington, notice of which has been published as required by law, at which all members of the public were given an opportunity to be heard on the question of whether or not the Port Commissioner District boundaries should be redrawn;

NOW, THEREFORE BE IT RESOLVED BY THE COMMISSION OF THE PORT OF CAMAS-WASHOUGAL AS FOLLOWS:

1. Pursuant to Revised Code of Washington Section 53.16.015 and RCW 29A.76.010, the Port Commission of the Port of Camas-Washougal hereby finds that the Port Commissioner Districts should be redrawn in the manner as set forth pursuant to the proposed map available on the Port of Camas-Washougal website at: <http://portcw.com/index.php/about/commission/>, and copy attached hereto as Exhibit "A."

2. The new Commissioner Districts shall be used at the next election at which a Port Commissioner is regularly elected that occurs at least 180 days after the redrawn Port Commissioner Boundaries have been submitted to the Clark County Auditor.

ADOPTED and APPROVED by the Commission this 6th day of September, 2011.


PORT OF CAMAS WASHOUGAL



Bill Macrae-Smith, President



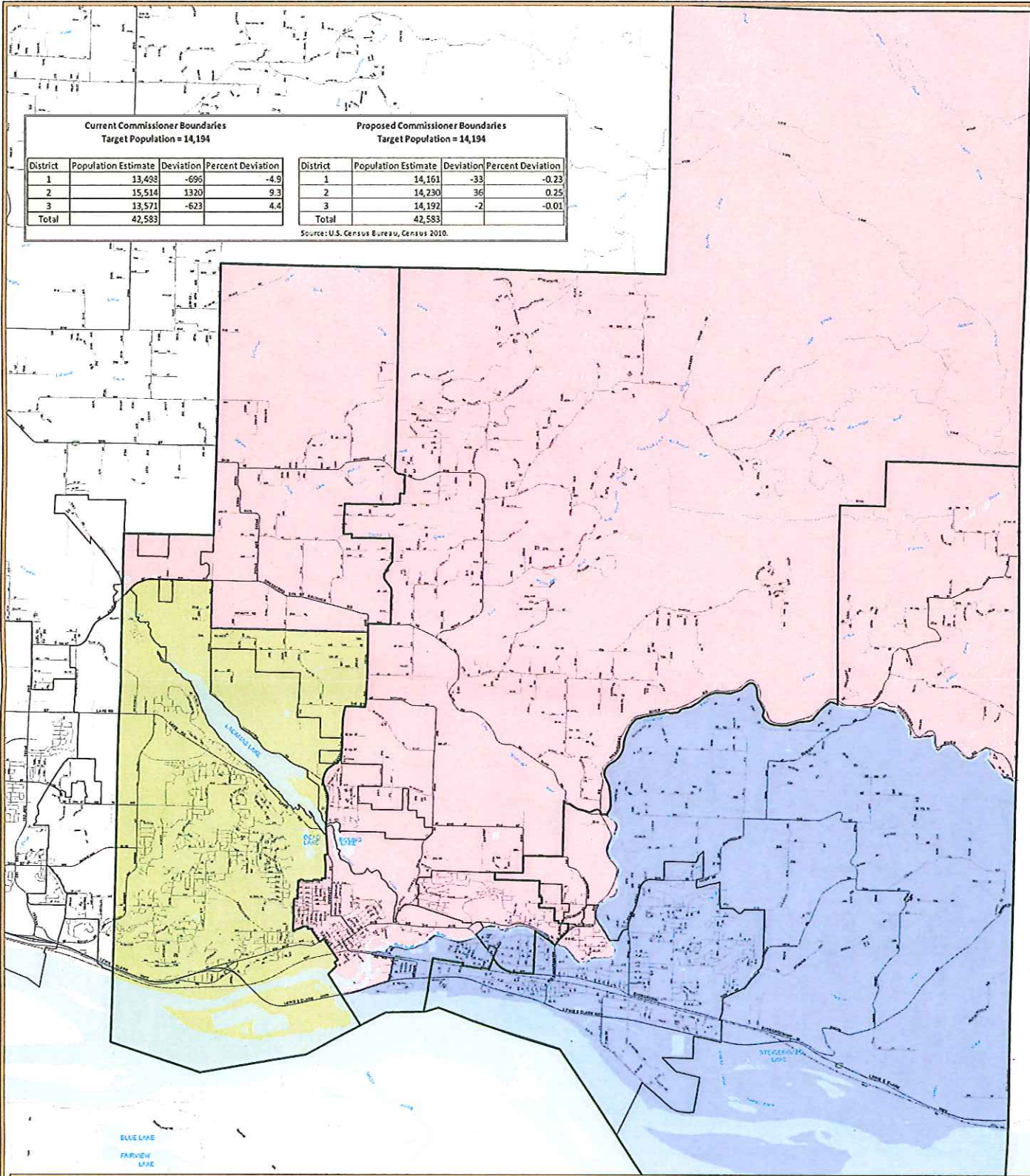
Mark Lampton, Vice-President



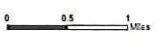
Bill Ward, Secretary

Current Commissioner Boundaries Target Population = 14,194				Proposed Commissioner Boundaries Target Population = 14,194			
District	Population Estimate	Deviation	Percent Deviation	District	Population Estimate	Deviation	Percent Deviation
1	13,498	-696	-4.9	1	14,161	-33	-0.23
2	15,514	1320	9.3	2	14,230	36	0.25
3	13,571	-623	4.4	3	14,192	-2	-0.01
Total	42,583			Total	42,583		

Source: U.S. Census Bureau, Census 2010.



- Legend**
- Proposed Commissioner Districts
 - District 1
 - District 2
 - District 3
 - Current Commissioner Districts
 - City Limits



PORT OF CAMAS-WASHOUGAL COMMISSIONER DISTRICTS



Exhibit "A"